



ESTABLISHED 1991

STEALTH VALVE & CONTROLS LTD.

The "Application Solution" Company®

Exclusive stocking distributors for Valves, Actuators, Instruments and Specialty Products Serving:
Industrial Power, Food and Beverage, Chemical, OEM, Municipal, Automotive, Petro-Chemical,
Pulp and Paper, Mining and Commercial Markets

Pressure & Vacuum Gauges



PMP PRECISION VALVE COMPANY LTD.

www.stealthvalve.com



THE "APPLICATION SOLUTION" COMPANY®



PMP Precision Valve Co. Ltd. model P (pressure) & PV (vacuum) gauges are designed for general service applications and are available in bottom or back connections. Gauges are liquid filled to protect all internal parts from the damaging effects of vibration and pulsations as a result of pressure fluctuations in the media and provides lubrication to all internal components.

These economical general-purpose gauges are available with bourdon tubes in either phosphor bronze or 316L stainless steel. The sockets are available in either OT58 Brass or 316L stainless steel. Bottom or center back connections offer installation flexibility in 1/4" or 1/2" NPT as an option. A pressure range from full vacuum to 400 PSIG, will meet the requirements of most industrial applications.

Dual scale markings indicate both ranges in PSI and kPa as standard.

Brass gauges are recommended for use in all locations where non-corrosive fluids are used. Stainless steel gauges are recommended where corrosive fluids can adversely affect the gauge material such as chemical processes. Model P & PV gauges are suitable for use on pumps, compressors, process pipelines, hydraulic units and other applications where quality gauges are required.

Available options including panel mount rings, isolating or flow control needle valves make the P & PV line of gauges a complete solution to most industrial applications requiring gauges.



A 316L Stainless steel bourdon tube offers corrosion resistance.

Over-Pressure limit:

- 25% for pressures up to 1400 PSI
- 15% for pressures above 1400 PSI

Pressure Range Selection:

- Recommended to be two times the media working pressure

Ambient/Process Temperature:

- -40°F to 150°F (-40°C to 66°F)



Stainless steel needle valve is used for pulsation damping.



Optional panel mounting ring allows for mounting gauges in control panels.



Bottom Connection

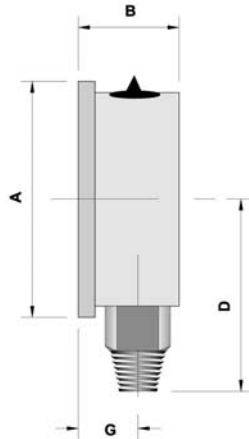
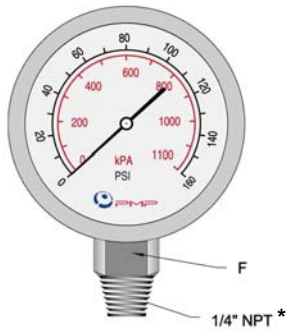


Back Connection

Gauge Specifications - Internals

Description	Brass	Stainless Steel
Case	AISI 304 Stainless Steel	AISI 304 Stainless Steel
Lens	Polycarbonate	Polycarbonate
Ring	AISI 304 Stainless Steel	AISI 304 Stainless Steel
Pointer	Aluminum, Anodized Black	Aluminum, Anodized Black
Connection	1/4" NPT(M) Brass	1/4" NPT(M) 316SS
Fill Liquid	Glycerin	Glycerin
Accuracy	+/- 1.5% (ANSI/ASME Gr 1A)	+/- 1.5% (ANSI/ASME Gr 1A)
Socket	OT58 Brass	316LSS
Bourdon Tube	Phosphor Bronze	316LSS, Seamless Drawn
Movement	OT59 Brass	304SS
Gasket Material	Silicone Rubber (Socket), EPDM (Lens, filling plug, blow-out vent)	
Protection	IP65 per UEC 529, UNI 8896	IP65 per UEC 529, UNI 8896
Welding	Silver Alloy	TIG

Bottom Connection

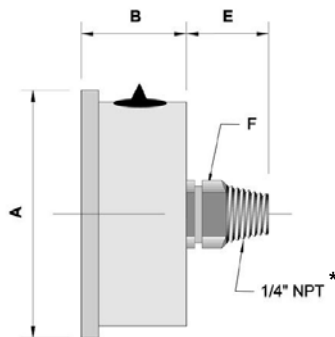


* 1/2" NPT available

Dial Size	A	B	D	F (SQ)	G
1 1/2" in	1.61	1.10	1.58	0.55	0.75
mm	41	28	40	14	19
2 1/2" in	2.64	1.18	2.09	0.55	0.79
mm	67	30	53	14	20
4" in	4.29	1.42	3.19	0.87	0.98
mm	109	36	81	22	25

Units: Inches (mm)

Center Back Connection



* 1/2" NPT available

Dial Size	A	B	E	F (SQ)
2 1/2" in	2.48"	1.12"	0.91	0.55"
mm	63	28.5	23	14
4" in	4.29"	1.42"	1.34"	0.87"
mm	109	36	34	22





Units: Inches (mm)



Gauge Ordering Chart

Type PV		065		Case S	Connection		Fill G	Pressure Range		
					Internals S	Style BC		- 05 - A		
Series	Code	Dial Size	Code	Case:	Material	Code	Pressure	Code	Connection Size	Code
Pressure	P	1.5"	040		AISI 304SS	S	30" Hg Vacuum	01	¼" NPT(M)	A
Vacuum	V	2.5"	065	Internals:	316LSS	S	30" - 15 PSI (100 kPa)	02	½" NPT(M)	B
Compound (pressure & vacuum)	PV	4"	100		OT58 Brass	B	30" - 30 PSI (210 kPa)	03	Other	S
		6"	150				30" - 60 PSI (410 kPa)	04		
				Style:	Back Connection	BC	30" - 100 PSI (700 kPa)	05		
					Lower Connection	LC	30" - 150 PSI (1050 kPa)	06		
					Center Back	CBC	30" - 200 PSI (1400 kPa)	07		
					Lower Back	LBC	30" - 300 PSI (2100 kPa)	08		
				Fill:	Glycerin	G	0 - 15 PSI (100 kPa)	09		
					Dry	D	0 - 30 PSI (210 kPa)	10		
							0 - 60 PSI (410 kPa)	11		
							0 - 100 PSI (700 kPa)	12		
							0 - 160 PSI (1100 kPa)	13		
							0 - 200 PSI (1400 kPa)	14		
							0 - 300 PSI (2100 kPa)	15		
							0 - 400 PSI (2800 kPa)	16		
							0 - 600 PSI (4200 kPa)	17		
							0 - 1000 PSI (7000 kPa)	18		
							0 - 1500 PSI (10500 kPa)	19		
							0 - 2000 PSI (14000 kPa)	20		
							0 - 3000 PSI (21000 kPa)	21		
							0 - 5000 PSI (35000 kPa)	22		
							0 - 6000 PSI (41000 kPa)	23		

**Above example part number indicates...
... a 2.5" stainless steel compound gauge with stainless steel connection, glycerin filled, 30" Hg vacuum to 100 PSI. ¼" NPT(M) connection.**

Stainless Steel Needle Valve Model H2032  <p>Add -N to part number</p>	Isolation Valves with Locking handle  <p>Add -V to part number</p>	Panel Mount Ring  <p>Add -P to part number</p>
Back Retaining Plate  <p>Add -R to part number</p>	Stainless Steel Adjustable Shock Absorber <p>Add -S to part number</p>	Stainless Steel Adapter <p>Add -AP to part number</p>

CONVERSION TABLE

	PSI	KPA	Kg/cm ²	CM of H2O	Feet of H2O	Inches of Hg	mm of Hg	Inches of H2O	Ounces per Square Inch	Atmospheres	Bar
PSI	1.000	6.895	0.070	70.307	2.307	2.036	51.715	27.681	16.000	0.068	0.069
KPA	0.145	1.000	0.010	10.197	0.335	0.295	7.501	4.015	2.321	0.010	0.010
Kg/cm²	14.223	98.067	1.000	1000.026	32.809	28.959	735.559	393.712	227.573	0.968	0.981
CM of H2O	0.014	0.098	0.001	1.000	0.033	0.029	0.736	0.394	0.228	0.001	0.001
Feet of H2O	0.434	2.969	0.030	30.480	1.000	0.883	22.419	12.000	6.936	0.029	0.030
Inches of Hg	0.491	3.386	0.035	34.533	1.133	1.000	25.400	13.595	7.858	0.033	0.034
mm of Hg	0.019	0.133	0.001	1.360	0.045	0.039	1.000	0.535	0.309	0.0013157895	0.001
Inches of H2O	0.036	0.249	0.003	2.540	0.083	0.074	1.868	1.000	0.578	0.002	0.002
Ounces per	0.063	0.431	0.004	4.394	0.144	0.127	3.232	1.730	1.000	0.004	0.004
Atmospheres	14.696	101.325	1.033	1033.263	33.900	29.921	760.000	406.794	235.136	1.000	1.013
Bar	14.504	100.000	1.020	1019.747	33.483	29.530	750.063	401.860	232.061	0.987	1.000
mbar	0.015	0.100	0.001	1.019	0.003	0.030	0.750	0.401	0.232	0.001	0.001
Mpa	145.000	0.001	10.197	10197.450	334.560	295.299	7500.610	4014.740	2320.603	9.669	0.100





ESTABLISHED 1991

STEALTH VALVE & CONTROLS LTD.

The "Application Solution" Company®



Automatic Control Valves
Ross Valve Company®



AWWA Butterfly and Ball Valves
Henry Pratt Company®



Air & Vacuum Relief/Check Valves
Crispin®



Knife Gate Valves
Stealth International Inc.®



Ball Valves
PMP Precision Valve®



**Resilient Seated Butterfly Valves,
Actuators and Accessories**
Bray Controls®



**Damper/Deflector/Energy
Dissipating Valves/Accessories**
Stealth International Inc.®



Automatic Strainers
Sure Flow Equipment®

• 24 HOUR EMERGENCY VALVE RESPONSE • 416 945 1258 •

ONTARIO – 1273 North Service Road East, Unit F6, Oakville ON L6H 1A7 – TEL 905 845 4500 • FAX 905 845 4505
2520c St. Laurent Boulevard, Suite 102, Ottawa ON K1H 1B1 – TEL 613 739 4626 • FAX 613 739 1679
BRITISH COLUMBIA – TEL 604 922 1855 • FAX 604 922 1355

QUEBEC – 3460 Poirier, St. Laurent QC H4R 2J5 – TEL 514 332 4260 • FAX 514 331 3924 • TOLL FREE 1 800 361 5571

